



# Anvil® Ladies 100% Ring Spun Cotton Tank Top 882L



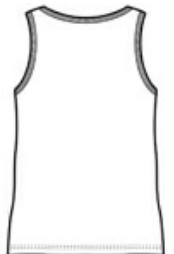
- 4.5-ounce, 100% ring spun combed cotton
- Semi-fitted silhouette with side seam
- Rib trim neck and armholes
- TearAway™ label
- Solid and contrasting trim color choices
- Double-needle hem
- Heather Grey is 90/10 cotton/poly

### CARE INSTRUCTIONS

Machine wash warm with like colors, only non-chlorine bleach when needed. Tumble dry medium. Do not iron if decorated.

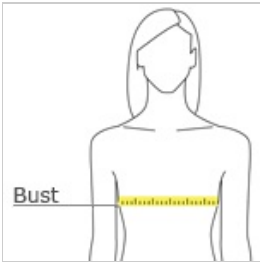


front



back

### HOW TO MEASURE



**BUST**  
With arms down at sides, measure around the upper body, under arms and around the fullest part of the bust.

### SIZE CHART

	S	M	L	XL	2XL
Bust	35-36	37-38	39-40	41-42	43-44
Waist	27-28	29-30	31-32	33-34	35-36
Hips	37-38	39-40	41-42	43-44	45-46

### COLOR INFORMATION

