

# Ultimate Pullover Hooded Sweatshirt PC90H



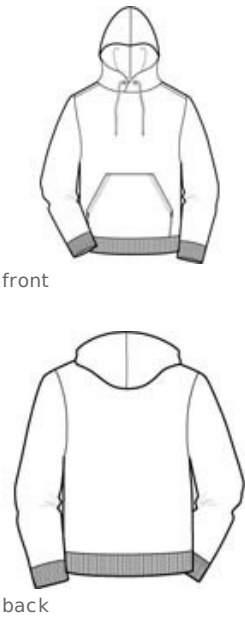
- A cozy, no-nonsense sweatshirt.
- 9-ounce, 50/50 cotton/poly fleece
  - Air jet yarn for a soft, pill-resistant finish
  - Two-ply hood
  - Dyed-to-match drawcord
  - Set-in sleeves
  - Front pouch pocket
  - Rib knit cuffs and waistband
  - Coverseamed neck, arm seams and waistband
  - Safety Green and Safety Orange are compliant with ANSI/ISEA 107 high visibility standards for background color.

Due to the nature of 50/50 cotton/polyester neon fabrics, special care must be taken throughout the printing process.

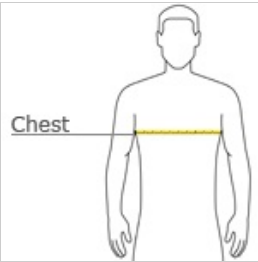
\*Please note: Safety Orange is transitioning to ANSI/ISEA 107 compliant product, resulting in darker, deeper coloring. Orders for Safety Orange may contain both shades.

**CARE INSTRUCTIONS**

Machine wash cold. Non-chlorine bleach when needed. Tumble dry medium. Do not iron decoration.



## HOW TO MEASURE



**CHEST**

With arms down at sides, measure around the upper body, under arms and over the fullest part of the chest.

## SIZE CHART

	S	M	L	XL	2XL	3XL	4XL
Chest	35-37	38-40	41-43	44-46	47-49	50-53	54-57

## COLOR INFORMATION

Ash PMS NO MATCH	Athletic Heather PMS NO MATCH	Cardinal PMS 7638 C	Charcoal PMS NO MATCH	Dark Chocolate Brown PMS 412 C	Dark Green PMS 5467 C	Gold PMS 137 C	Jet Black PMS NTR BLACK CPMS 340 C	Kelly Green	Maroon PMS 504 C	Navy PMS 533 C
Orange PMS 172 C	Pale Pink PMS 705 C	Purple PMS 7672 C	Red PMS 200 C	Royal PMS 7684 C	Safety Green PMS NO MATCH	Safety Orange PMS NO MATCH	White PMS WHITE			